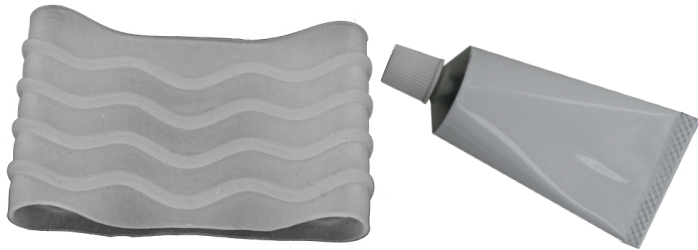


## Parts Included



Wave Suction Band

2 oz. Silicone Adhesive

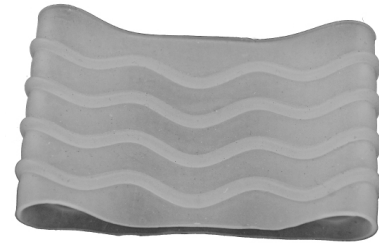
**Coyote Design**

# CD130BX

## Extra Large Wave Suction Band

Diameter 15" to 18", Width 4", Thickness 5/32"

### Fabrication Instructions



#### Wave Suction Band sizes

Part Number	Size	Diameter	Width	Thickness
CD130BS	Small	5.5" to 8.5"	4"	5/32"
CD130BM	Medium	8.5" to 12"	4"	5/32"
CD130BL	Large	12" to 15"	4"	5/32"
CD130BX	Extra Large	15" to 18"	4"	5/32"

Manufactured by



419 N. Curtis Rd., Boise, Idaho 83706  
(208) 429-0026 | www.coyotedesign.com

3-month warranty against manufacturer defects, excessive wear or breakage.

Made in U.S.A.

External Prosthetic Components



EC REP

Advena Ltd  
Pure Offices Plato Close  
Tachbrook Park  
Warwick, CV34 6WE, UK



CD130BX.revA.08282017

## Attaching Seal Band

**Clean baby powder off Wave Suction Band with rubbing alcohol before gluing band to liner.**



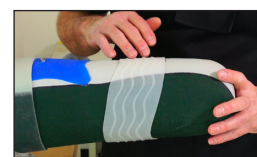
**1** With liner on patient position band in desired location.



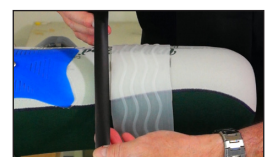
**2** Mark band location on distal and proximal sides of band.



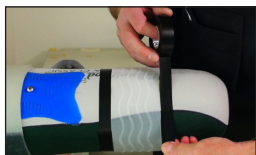
**3**



**4** For unconventional band position mark band in multiple locations.



**5** Wrap the liner with electrical tape or vynal tape next to the band without over laping it.



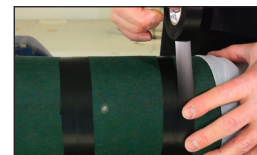
**6** Tape off both ends of the band.



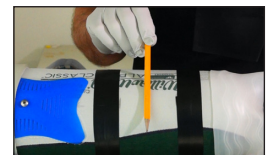
**7** Remove the band



**8** Add extra tape to protect a wider area.



**9**



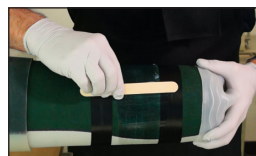
**10** Put a bead of silicone adhesive around the liner about the thickness of a pencil.



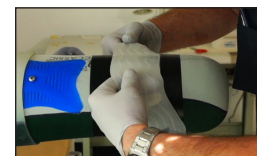
**11** Smooth the silicone out with a tung depressor. Make sure to saturate the material.



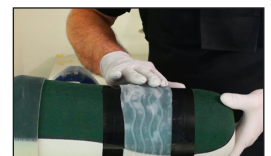
**12** Check the edges for areas that need more silicone adhesive.



**13** Smooth the silicone out.



**14** Carefully place the seal band over the glued area.



**15** Center the band with tape to the edges.