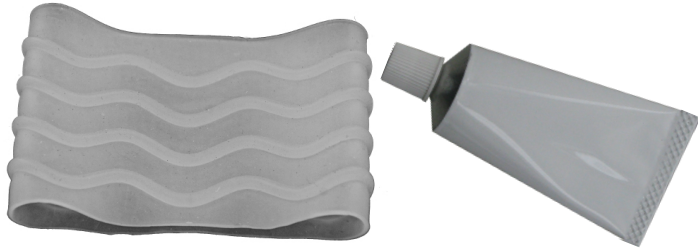


Parts Included



Wave Suction Band

2 oz. Silicone Adhesive

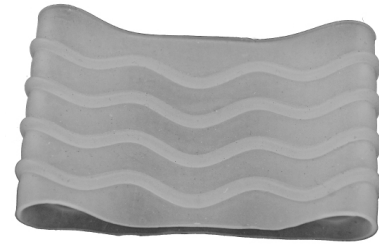


CD130BL

Large Wave Suction Band

Diameter 12" to 15", Width 4", Thickness 5/32"

Fabrication Instructions



Wave Suction Band sizes

Part Number	Size	Diameter	Width	Thickness
CD130BS	Small	5.5" to 8.5"	4"	5/32"
CD130BM	Medium	8.5" to 12"	4"	5/32"
CD130BL	Large	12" to 15"	4"	5/32"
CD130BX	Extra Large	15" to 18"	4"	5/32"

Manufactured by



419 N. Curtis Rd., Boise, Idaho 83706
(208) 429-0026 | www.coyotedesign.com

3-month warranty against manufacturer defects, excessive wear or breakage.

Made in U.S.A.

External Prosthetic Components



EC REP

Advena Ltd
Pure Offices Plato Close
Tachbrook Park
Warwick, CV34 6WE, UK



CD130BL.revA.08282017

Attaching Seal Band

Clean baby powder off Wave Suction Band with rubbing alcohol before gluing band to liner.



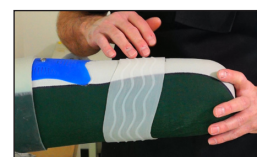
1 With liner on patient position band in desired location.



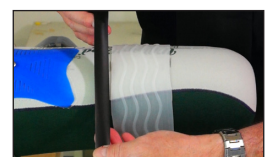
2 Mark band location on distal and proximal sides of band.



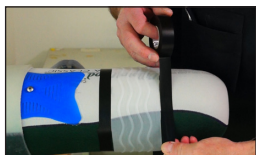
3



4 For unconventional band position mark band in multiple locations.



5 Wrap the liner with electrical tape or vynal tape next to the band without over laping it.



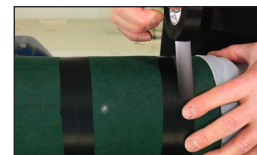
6 Tape off both ends of the band.



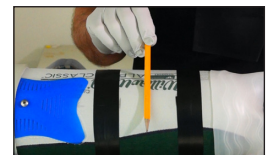
7 Remove the band



8 Add extra tape to protect a wider area.



9



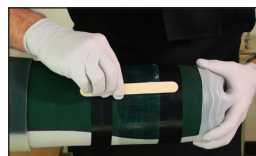
10 Put a bead of silicone adhesive around the liner about the thickness of a pencil.



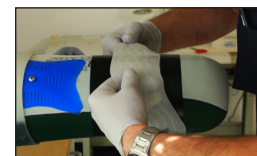
11 Smooth the silicone out with a tung depressor. Make sure to saturate the material.



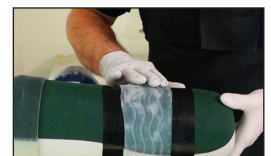
12 Check the edges for areas that need more silicone adhesive.



13 Smooth the silicone out.



14 Carefully place the seal band over the glued area.



15 Center the band with tape to the edges.